



A Tradecomp apresenta:

**Terminal Vision Endurance
Terminal Vision Endurane Engine**

Maio 2011





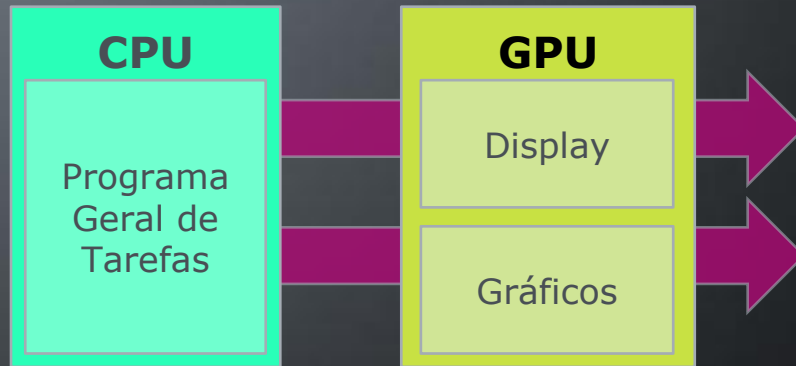
Endurance foi desenvolvido para tornar ambientes hostis em meros locais diferenciados de trabalho.



Introduzindo a nova Família AMD Fusion de APUs Accelerated Processing Units

Processadores AMD Embedded G-Series

Geração anterior CPU e IGP (2010)



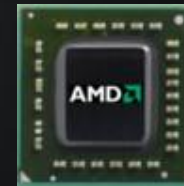
Projetados para:

- > Multitarefa
- > Aplicações do dia-a-dia
- > Processamento de dados em série

Projetados para:

- > Tarefas especializadas (ex: graficos, video)
- > Aplicações visuais mais utilizadas
- > Processamento de dados em paralelo

1st Geração de APU (2011)

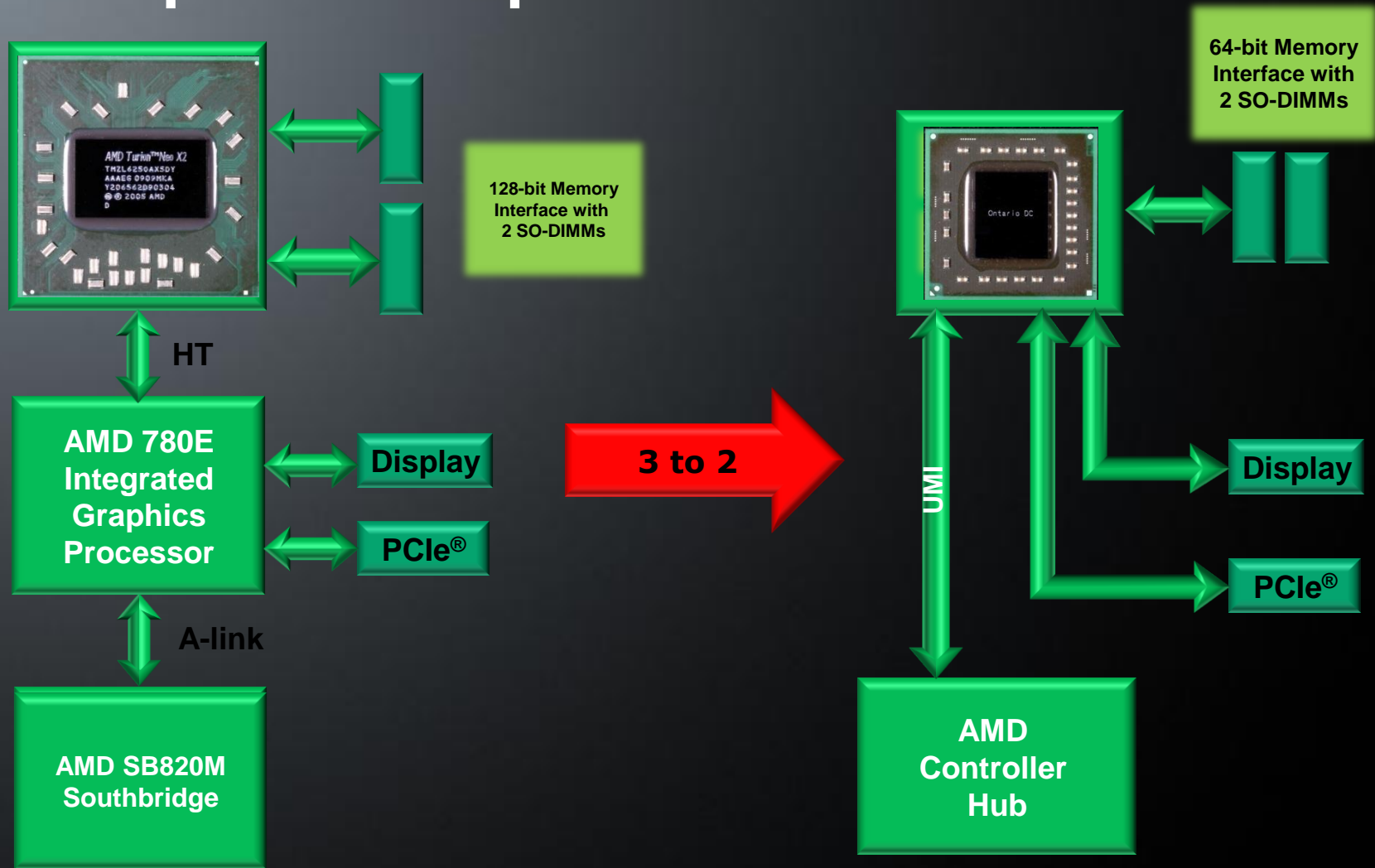


Projetado para

- > Multitarefa
- > Arquitetura com barramento de alta velocidade
- > Compartilhado, modelos de memória com baixa latência
...Tudo no mesmo chip



Mudança física na arquitetura do AMD Fusion do soquete ASB2 para FT1



Arquitetura da Plataforma AMD Embedded G-Series

Fully Integrated Solution
HDCP + Audio

Two
Independent
Display
Controllers¹

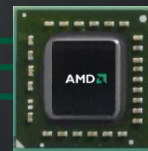


Dual DVI /
HDMI™ or
DisplayPort



LVDS

VGA



64-bit

4 x1

4 x1

Memory



PCI EXPRESS

Gen 2

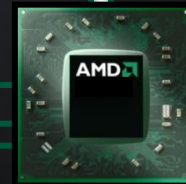


14x USB 2.0

2x USB 1.1

HD Audio

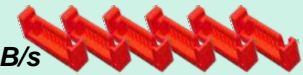
Integrated Ethernet MAC
(A55E)



4 x1



6X
SATA 6GB/s
w/RAID(A55E)



PCI EXPRESS

Gen 2

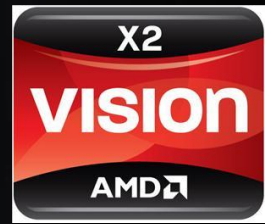


33MHz PCI (A55E)

1. Capable of driving a total of two independent displays in a variety of combinations.



VISION Endurance



APU AMD Embedded G-series:

- T40N: 2-Core@1.0GHz@9W;**
- T44R: 1-Core@1.2GHz@9W;**
- * T40E: 2-Core@1.0GHz@6.4W;**
- * T40R: 1-Core@1.0GHz@5.5W**

* **T40E** e **T40R** disponíveis no 2º semestre de 2011



fanless



Chipset: AMD Fusion Controller HUB (FHC) A50M
Memoria RAM até 4GByte
Armazenamento: DOM FLASH
5 Portas USB 2.0
WIFI
Saída HDMI 1080p / 720p, HDMI extra(opcional)
Saída eSATA+USB 2.0
Saída Microfone e Fone de Ouvido
Consumo de Energia: 40 W
Alimentação 12 V



6

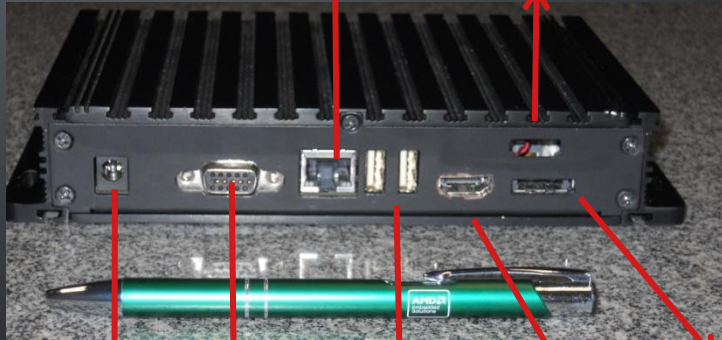


VISION Endurance (fanless)



Ethernet 10/100/1000

HDMI extra (opcional)



Mic / Fone de Ouvido

USB 2.0 x 2

AC/DC

USB 2.0 x 2

HDMI

eSATA + USB 2.0 x 1

VGA



VISION Endurance Engine



APU AMD Embedded G-series

T56N: 2-Core@1.6GHz@18W;

T48N: 2-Core@1.4GHz@18W;

T40N: 2-Core@1.0GHz@9W;

T44R: 1-Core@1.2GHz@9W;

***T40E: 2-Core@1.0GHz@6.4W;**

***T40R: 1-Core@1.0GHz@5.5W**

* T40E e T40R disponíveis no 2º semestre de 2011

Chipset: AMD Fusion Controller HUB (FHC) A50M

Memória RAM até 4GByte

Disco Rígido SATA 2.5"

5 Portas USB 2.0

WIFI

Saída eSATA+USB 2.0

Saída HDMI 1080p / 720p

Saída Microfone e Fone de Ouvido

Consumo de Energia: 50 W

Alimentação 12 V



fanless



8



VISION Endurance Engine (fanless)



Ethernet 10/100/1000

eSATA + USB 2.0 x 1

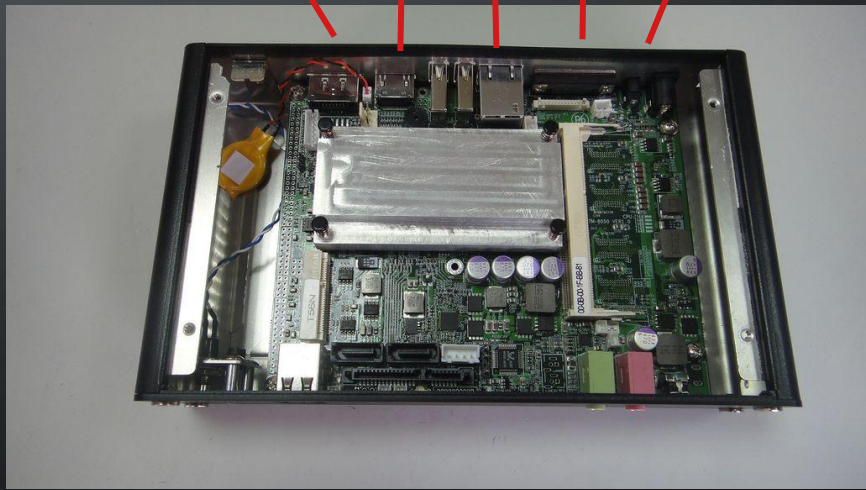
HDMI

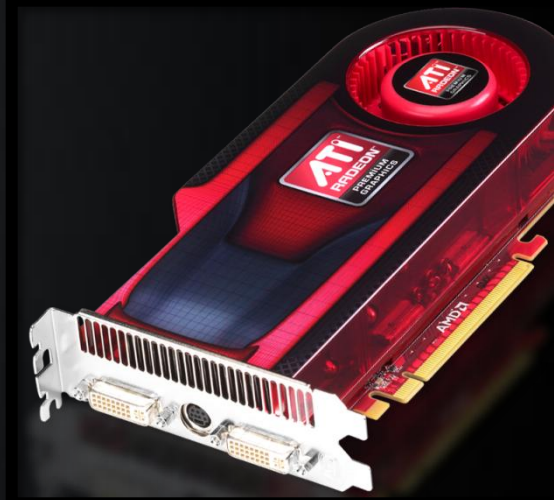
VGA

AC/DC

USB 2.0 x 2

Mic / Fone de Ouvido





Obrigado!
Luis Augusto Garcia
luis-garcia@tradecomp.com.br



Trademark Attribution

AMD, the AMD Arrow logo and combinations thereof are trademarks of Advanced Micro Devices, Inc. in the United States and/or other jurisdictions. Other names used in this presentation are for identification purposes only and may be trademarks of their respective owners.

©2008 Advanced Micro Devices, Inc. All rights reserved.

